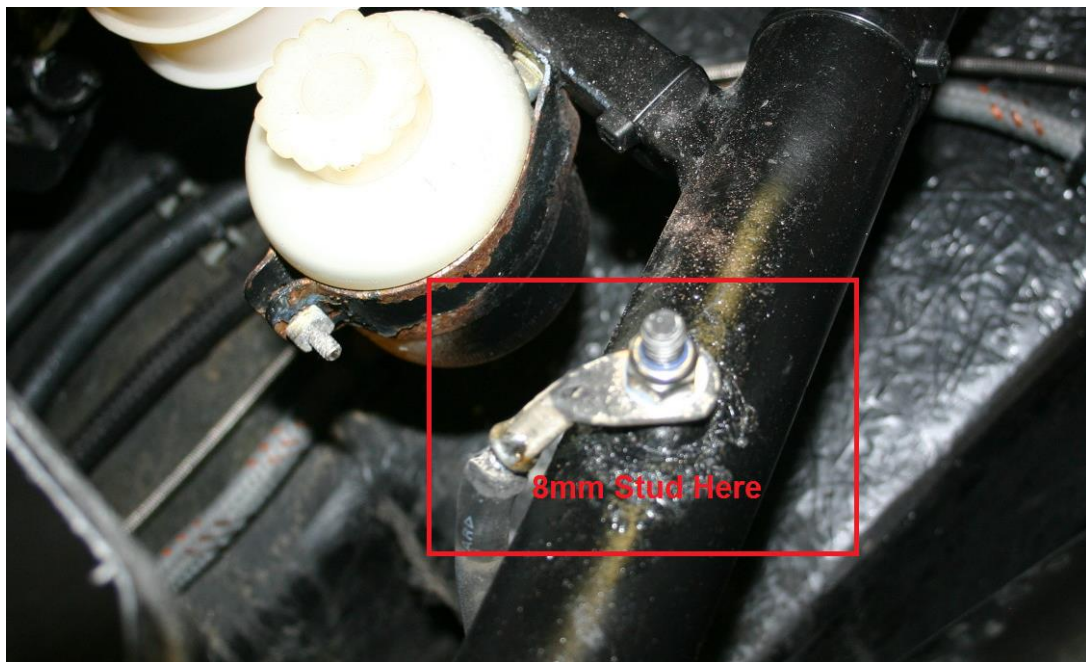


FunCup Service Bulletin
23-02-15

Battery Negative Earth Cable

The Earth (Ground) cable from the battery negative to the chassis **MUST** be fastened as pictured using quality 16mm² cable.

An 8mm Stud must be welded to the top chassis tube as pictured. The cable must fasten to this point and to the battery negative terminal.





Gear-Shift Solenoid Packer

We have noticed some of the gear-shift solenoid housings have discrepancies caused during the welding process. This has caused the tab to warp very slightly inwards which could eventually cause the solenoid housing to crack once tightened to the gear-shift solenoid mounting bracket.

We will provide all existing customers with a 1mm packer that must be placed between the gear-shift solenoid and the mounting bracket (See Picture). We will also provide longer M8x35mm SHCS bolts as to ensure the bolt protrudes into the nylock nut.

